

THE AUSSIE AIRCRAFT FINDER

Aircraft Register for Windows

The Australian Aircraft Register for Windows, is a computer software tool that presents and sorts information about the Aircraft on the Australian register.

This is the MAIN SCREEN that is displayed when you open the program from your Desktop.

Aussie Aircraft Finder

Print Clip About Data Update

FAST EXIT FIRST BACK FWD LAST NOTES SEARCH CLIP PRINT

Aircraft

Call Sign	MA0	Aircraft	BEECH	Type	36	Model	A36
Serial No	E-1226	Engine	CONTNTAL	Model	IO-520-BA		
Power Type	Reciprocating	Landing Gear Type	Tricycle-retractable				
Fuel Type	100-130 Octane Avgas	Airframe Category	Aeroplane				
No of Engines	Single	C of A Category	Normal Utility				
Operational Class	General Aviation	Date 1st Registered	27 / 06 / 1978				
MTOW KG	001633						

Australian Civil Aircraft Register

Owner

DIRECTION FISHERIES PTY LTD
ATT: MR FRANCIS AYLMORE
32 RIDLEY ROAD WOORREE 6530

Current Owner Since 16 / 08 / 1994

BUTTONS



Buttons that control the “Finder” program are located on the “Toolbar” along the top of the window. Each BUTTON has an ICON and below is a description of what action is taken when the BUTTON is “clicked” with the mouse.

BUTTON

Fast Search
Exit Program
First Record
Back Record
Next Record
Last Record
Notes on Aircraft
Search for.....
Clip information to clipboard
Print displayed Record

ICON

Lightening Bolt
Stop Sign
Hand pointing Up
Hand Pointing Left
Hand pointing Right
Hand Pointing Down
Notepad
Binoculars
Paper Clip
Sheets of Paper



Fast Search

Clicking on the Fast Search (Lightening Bolt) button will display a request for the registration letters for an aircraft. The Fast Search will go directly to the Call-Sign that you enter here, and will display the information for that aircraft.

FAST SEARCH ENTRY BOX. Enter the three letters of the Call-Sign of the aircraft to search.



Exit Program

This will end the program and return you to the Windows Desktop.



First Record

Clicking on the FIRST RECORD Button will always select the first record in the database. This also will select the first record in a group of aircraft that you have selected when using the SEARCH FOR... Button.



Back Record

Clicking on the BACK RECORD Button will move back through the aircraft records, one record at a time.



Next Record

Clicking on the NEXT RECORD Button will move forward through the aircraft records, one record at a time.



Last Record

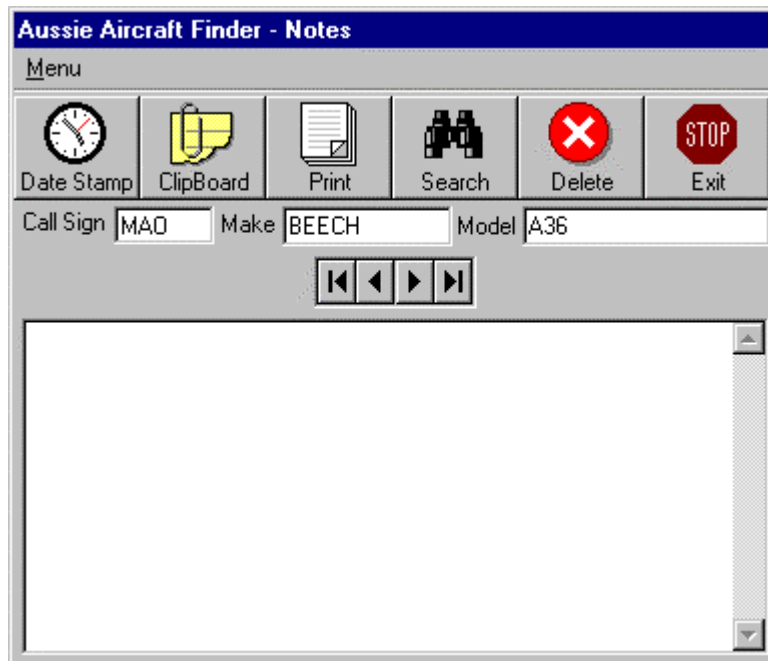
Clicking on the LAST RECORD Button will move directly to the last record in the database. This also will select the last record in a group of aircraft that you have selected when using the SEARCH FOR... Button



Notes on Aircraft

Clicking on the NOTES will open a small data file for the aircraft that is currently active on the main screen. The Notes database is shown below.

When you upgrade your Aircraft Register Data, the NOTES database is not affected. The information in NOTES is retained.



Pressing the NOTES icon on the Toolbar will open the NOTES database at the selected aircraft.

Features available for NOTES are:

Date Stamp – will enter the current date and time into the NOTES file for the selected aircraft.

ClipBoard – will get all the information in the NOTES file for the selected aircraft into the clipboard.

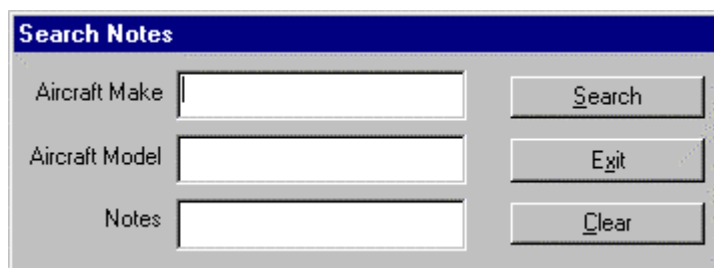
Print – will print the contents of the NOTES file

Search – will allow keyword searches on all your NOTES files.

Delete – will delete the current selected aircraft NOTES.

Exit – will return to the Aussie Aircraft Finder Main program.

The following screen displays the NOTES search engine.



Search for.....

Clicking on the SEARCH FOR.. Button will open the QUERY WINDOW. From this window, all the aircraft on the Register can be sorted and records that match certain criteria can be selected by using the mouse to build a QUERY.



Clip information to clipboard

Clicking on CLIP will place the Owner's name and address into the Windows clipboard, making it available to PASTE commands in most Windows applications. From the MENU above the TOOLBAR you can select CLIP and have the option of copying the Owner's Name and Address or the complete Aircraft Record to the Windows Clipboard.



Print displayed Record

Clicking on PRINT will send the Aircraft Record that is currently displayed on the MAIN SCREEN to the Printer. The MENU also contains a number of PRINT COMMANDS. These are only activated after a SEARCH FOR.. QUERY has been activated.

QUERY WINDOW

Pressing the SEARCH FOR...Button will open a screen for you to specify the conditions for a search of the aircraft records. The results of a query are then returned, with the number of found records displayed. You can move through them with the forward and reverse buttons on the TOOLBAR. The results of a search may also be printed out or displayed in a number of different formats. See the menu option **PRINT** and also see the section on MAKING QUERYS.

Select Aircraft Listing

Category: Engine Make, Engine Model, Powerplant Type, Fuel Type, **Owners Name**, Postcode, No of Engines, Landing Gear Type

Operators: =, <, AND, >, OR, <=, >=, NOT

Aircraft Make: [Image of an aircraft]

Value: WOMBAB

Aircraft Make equal to PZL and Serial Number greater than 25-210 and Max takeoff weight greater than 05300 and Owner's lastname like

Query Instructions: Type the VALUE into the Value box above and press ENTER or click the VALUE button.

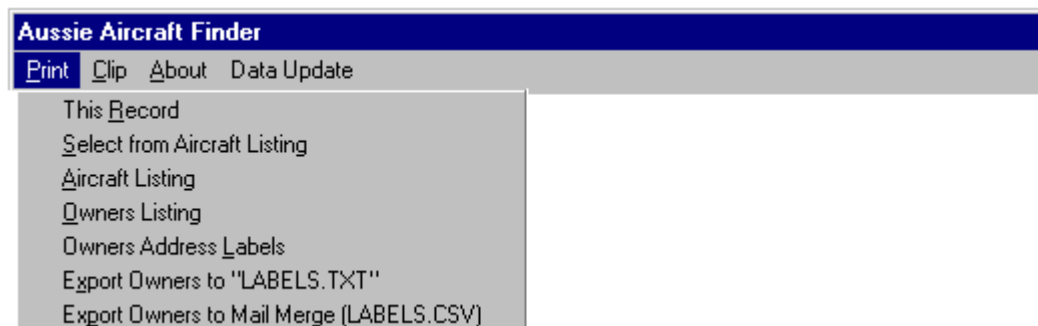
VALUE CLEAR CANCEL

QUERY OFF

Pressing the Query Off button on the MAIN SCREEN TOOLBAR will deactivate the record set that was found with a Query search and redisplay the complete record set. The record set is displayed one record at a time on the main screen.

MENU OPTIONS

The Menu Bar (the top row of the Main Screen) contains four items; "Print", "Clip", "About" and "Data Update".



Print

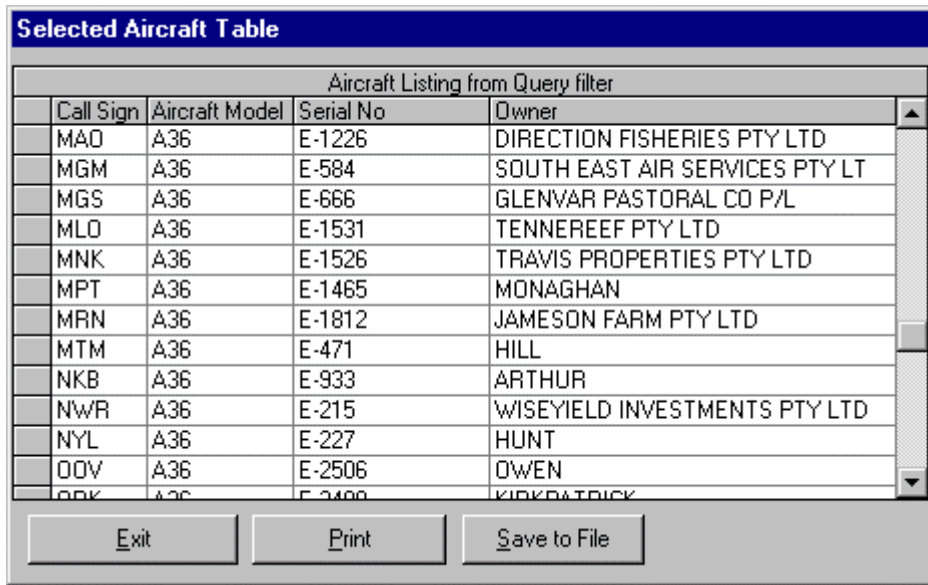
Selecting the Menu option “Print” will show only one selection unless a QUERY has been set using the SEARCH FOR... window. Once a QUERY has been set, all the options for the PRINT MENU are activated as shown above.

THIS RECORD

- Prints the currently displayed record in the format of a data sheet

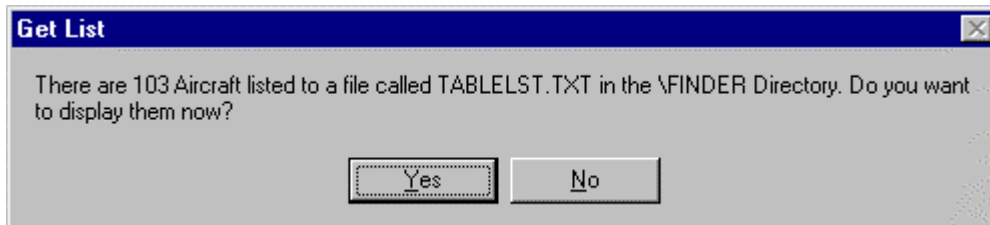
SELECT FROM AIRCRAFT LISTING

- Displays the following table with a scrolling list of the Aircraft that match the search query.

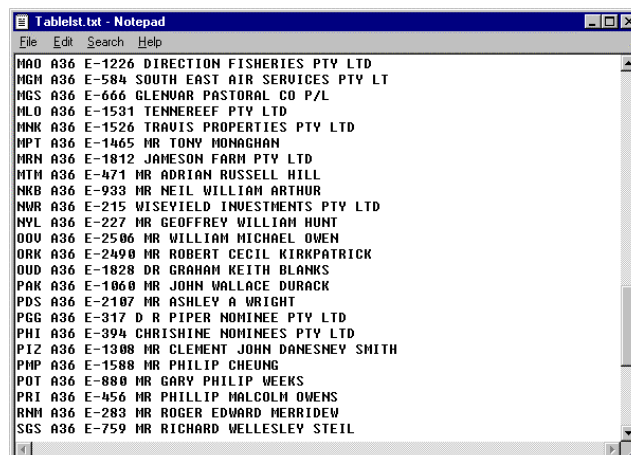


Aircraft Listing from Query filter			
Call Sign	Aircraft Model	Serial No	Owner
MAO	A36	E-1226	DIRECTION FISHERIES PTY LTD
MGM	A36	E-584	SOUTH EAST AIR SERVICES PTY LT
MGS	A36	E-666	GLENVAR PASTORAL CO P/L
MLO	A36	E-1531	TENNEREEF PTY LTD
MNK	A36	E-1526	TRAVIS PROPERTIES PTY LTD
MPT	A36	E-1465	MONAGHAN
MRN	A36	E-1812	JAMESON FARM PTY LTD
MTM	A36	E-471	HILL
NKB	A36	E-933	ARTHUR
NWR	A36	E-215	WISEYIELD INVESTMENTS PTY LTD
NYL	A36	E-227	HUNT
OOV	A36	E-2506	OWEN
ORK	A36	E-2490	KIRKPATRICK

The following dialog prompt will be displayed when the “Save to File” button is pressed.



Pressing the “YES” button will display the saved file in the Windows NOTEPAD format as shown below.



AIRCRAFT LISTING

- This Print menu option will send the **results of the query search** to the printer, listing the aircraft call-sign, aircraft make, type, model and serial number..

OWNERS LISTING

- This Print menu option will send the **results of the query search** to the printer, listing the aircraft call-sign, full name, and postal address.

OWNERS ADDRESS LABELS

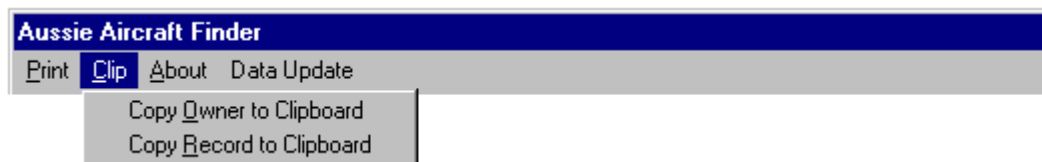
- This Print menu option will send **the results of the query search** to the printer, listing the owners name and address in an address label format. Unlike the other print reports, this feature will not print any duplicate names for owners. You can set how many labels per page will be printed.

OWNERS ADDRESS LABELS TO FILE

- This option save the address labels to a text file for importing into any standard word processor. The file name is LABELS.TXT.

OWNERS ADDRESS LABELS TO MAIL MERGE CSV FILE

- This option saves the address labels to a comma delimited text file. This file can be imported and used in Mail Merge operations in most common word processors without any modification. The file name is in the default FINDER directory and is called LABELS.CSV.



Clip

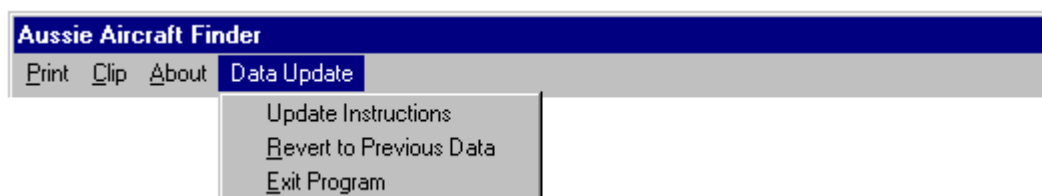
Selecting the “Clip” option from the MENU will give a choice of two items:

- 1] Copy the Displayed Aircraft Owner to the Clipboard.
- 2] Copy the Entire Displayed Aircraft Record to the Clipboard.



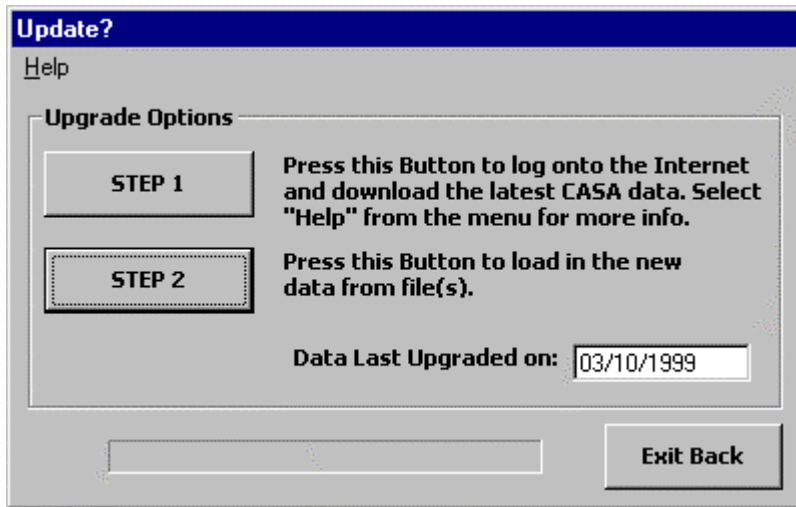
About

Selecting the Menu option “About” will display a screen detailing contact details and active Internet links to the Aussie Aircraft Finder Homepage.



Data Upgrade

Selecting the Menu option “Data Upgrade” will display the choices to allow you to get a fresh data file from the Internet. “Update Instructions” will display the following dialog screen.



Press STEP1 to log onto the Internet and browse to the “Aircraft Register” section on the CASA web site. The CASA website is automatically loaded when you press the STEP 2 button providing you have a Web Browser and a connection to the Internet.

Press STEP 2 and you will be prompted to select the file or files that you have downloaded from the CASA Website. Pressing “EXIT BACK” will terminate the upgrade. When an upgrade is performed the date of the upgrade is recorded in the program, so you can check at any time to verify the recency of your data. As well as record the date, a backup of your previous data file is kept on the computer.

MAKING QUERYS

Querys are a question that the user asks the computer. The question must be valid for the computer to understand. The following example shows the format for asking the computer for a set of aircraft.

The three building blocks for querys are:

CATEGORY OPERATOR and VALUE

for example:

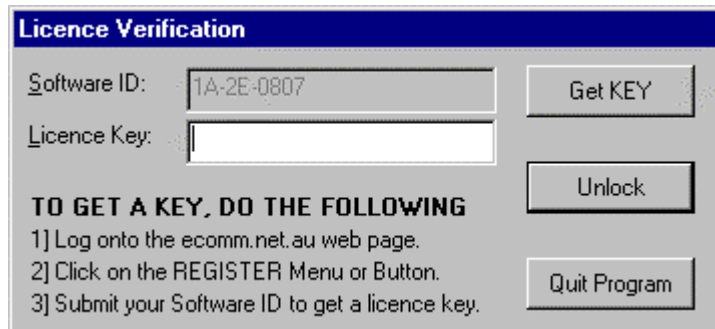
MAKE = “CESSNA”

In the line above the “MAKE” is taken from the CATEGORY box, “=” is taken from the OPERATOR box and “CESSNA” is a VALUE that is listed in the VALUE box on the right hand side of the main screen. Pressing the OK button will now return all the Cessna aircraft on the database.

A simple query for finding all the Cessna 172 aircraft in South Australia can be constructed by ‘clicking’ the mouse in the boxes to select your search formula. The actual code is then displayed in sentence form in the the ‘QUERY BOX’ .

Licensing of the Aussie Aircraft Finder

The data is available for NO CHARGE from the CASA Website, but the Aussie Aircraft Finder software must be licensed. To licence the software, you will be prompted when you first attempt to use the program, to enter your LICENCE KEY.



The image shows a 'Licence Verification' dialog box with a blue title bar. It contains two input fields: 'Software ID:' with the value '1A-2E-0807' and 'Licence Key:' which is empty. To the right of the 'Software ID' field is a 'Get KEY' button. Below the 'Licence Key' field is an 'Unlock' button. At the bottom right is a 'Quit Program' button. On the left side, below the input fields, is the text 'TO GET A KEY, DO THE FOLLOWING' followed by a numbered list: '1] Log onto the ecomm.net.au web page.', '2] Click on the REGISTER Menu or Button.', and '3] Submit your Software ID to get a licence key.'

Install the Aussie Aircraft Finder from the CD or from the Web Download File. The CD installation will come with data so there is no requirement to obtain data before use. The Web Download File does not contain data, so you will need to get the latest data from the CASA Website before using the program.

What to do:

- 1] Install the Aussie Aircraft Finder
- 2] Click one of the Icons in the FINDER TOOLBAR to activate the License Key box.
- 3] Submit the SOFTWARE ID number displayed in the dialog box and obtain a Licence Key.
- 4] Enter the Licence Key into the Licence Dialog box and press the UNLOCK button.

Licence Keys are available from Ecomm through the Ecomm Website on <http://ecomm.net.au> . Log on, then select the LICENCE menu item. Follow the prompts and enter your SOFTWARE ID when required. A key will be sent to you by email or displayed on the Webpage. Alternatively send a facsimile with your Company name, SOFTWARE ID and return facsimile number, and a key will be faxed to you.